



Panasonic

Robot & Welding

THE WELDING EXPERTS.

**ROBOTIC WELDING
SYSTEM**

PERFORMARC™
ROBOTIC WELDING SYSTEM

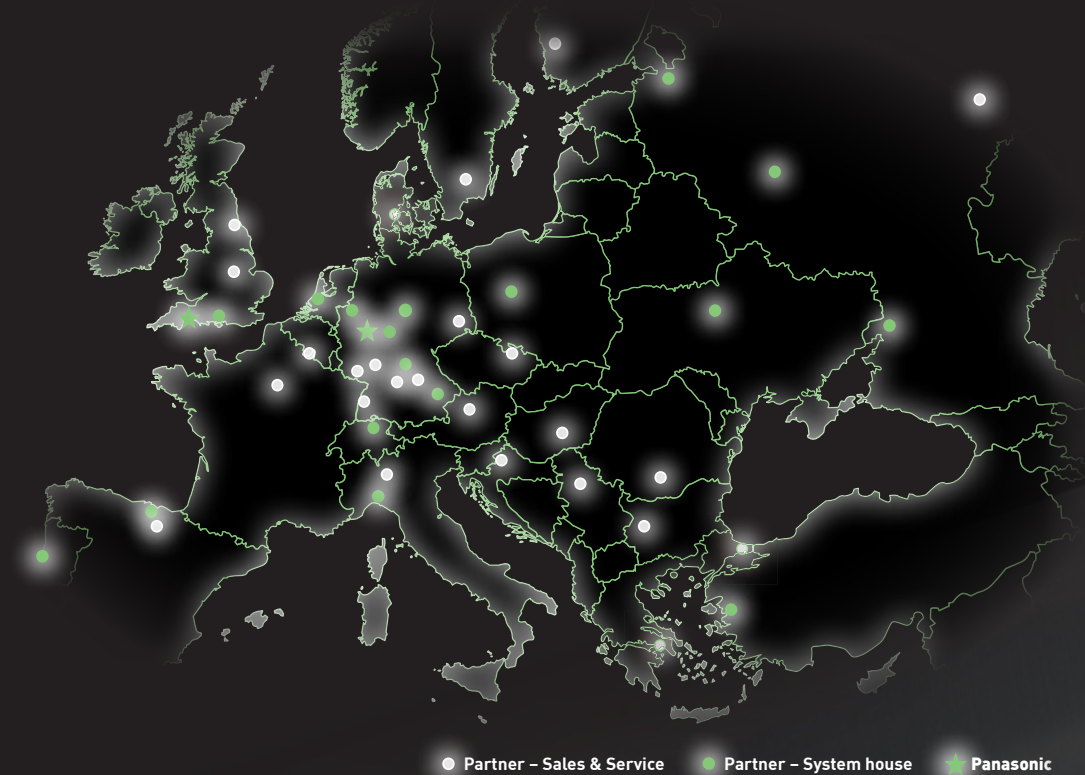
www.panasonicrobotics.eu

COMPANY PROFILE

Since 1957 Panasonic develops welding technology products and is nowadays worldwide present in the field of MIG/MAG/TIG and robot welding. The Panasonic Robot & Welding Europe is the European Distributor for products and services all about welding. The headquarter is located in Neuss near Dusseldorf and offers a big training room, a welding test area and forms herewith the center of excellence for robot and welding systems. With a huge distributor Network Panasonic is almost represented in every European country. It is our aim to support the entire industry with "All From One Manufacturer" solutions in the field of welding.

PRODUCT & SERVICE

Panasonic offers a turnkey welding system for arc welding – with welding and handling robots, welding power sources, welding torches and much more. Therefore we cover a wide range of industrial applications. Our provided robot welding systems are equipped with robots of the TM-WG3 range (TAWERS systems with an integrated welding power source) or the TM-G3 range (robots with an external digital Panasonic power source). Whether general or automotive industry Panasonic always offers the best solutions of products to be manufactured in cooperation with customers.



PERFORMARC ROBOTIC WELDING SYSTEM

Panasonic PerformArc Robotic Welding Systems provide exactly what welding customers expect! Our welding cells are of modular concept developed by using standard reliable Panasonic components. We provide turnkey, cost efficient and universally usable welding solutions.

Your benefits are easy settings due to only one teach pendant for robot and power source and reducing running costs due to only one Panasonic technician who is needed for any training and maintenance. Check out our standard systems and examples for dedicated ones.

Welding cells from one manufacturer:

1. Configuration
2. Implementation
3. Completion
4. After-Sales

...

GENERAL STRUCTURE OF PERFORMARC

1. PERFORMARC – MANUAL TABLE (PA-MT)
2. PERFORMARC – ELECTRICAL TABLE (PA-ET)
3. PERFORMARC – TURNING TABLE (PA-TT)
4. PERFORMARC H-FRAME
5. PERFORMARC FERRIS WHEEL (PA-FW)

OVERVIEW



PA-MT-SERIES



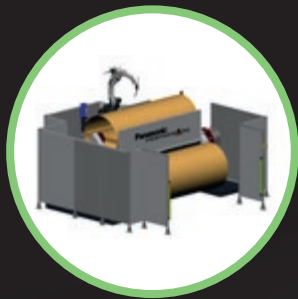
PA-ET-SERIES



PA-TT-SERIES



PA-H-FRAME



PA-FW-SERIES

PA-MT-SERIES

PA-MT / PA-MT-XL / PA-MT-XXL



PA-MT Perspective



PA-MT Transparent Perspective



PA-MT Top View



PA-MT Side View

Specifications			
Model	PA-MT	PA-MT-XL	PA-MT-XXL
Work Table (mm)	1.000 x 500	1.000 x 500	1.000 x 500
Max. Work Place (mm)	Ø 1.000 x 600	1.100 x 600	1.300 x 700
Fixture Area (mm)	Ø 1.000 x 600	1.500 x 600	1.900 x 850
Payload (each in kg)	250	250	250
Measurements (L x W x H in cm)	440 x 220 x 230	460 x 240 x 230	480 x 310 x 230
Approx. Weight (kg)	3.200	3.500	3.600
Recommended robot type	TM-1400	TM-1400/ TM-1800	TM-1800

PA-ET-SERIES

PA-ET-SERIES

PA-ET / PA-ET-XL / PA-ET-XXL



PA-ET Perspective



PA-ET Transparent Perspective



PA-ET Top View



PA-ET Side View

Specifications	PA-ET	PA-ET-XL	PA-ET-XXL
Model	PA-ET	PA-ET-XL	PA-ET-XXL
Work Table (mm)	500 x 500	500 x 500	500 x 500
Max. Work Place (mm)	1.000 x 600	1.100 x 600	1.300 x 700
Fixture Area (mm)	1.000 x 600	1.600 x 800	1.900 x 850
Payload (each in kg)	500	500	500
Turn Time (sec.)	≤ 5	≤ 5	≤ 5
Measurements (L x W x H in cm)	540 x 220 x 230	560 x 270 x 230	580 x 310 x 230
Approx. Weight (kg)	3.500	3.800	3.900
Recommended robot type	TM-1400	TM-1400/ TM-1800	TM-1800

**ALSO AVAILABLE
WITH TWO ROBOTS!**

PA-ET-2PD-SERIES

PA-ET-2PD / PA-ET-2PD-XL /
PA-ET-2PD-2R / PA-ET-XXL-2R



PA-ET-2PD Transparent Perspective



PA-ET-2PD Top View

PA-ET-2DK-SERIES

PA-ET-2DK-250 / PA-ET-2DK-500 /
PA-ET-2DK-250-2R / PA-ET-2DK-500-2R



PA-ET-2DK Transparent Perspective



PA-ET-2DK Top View

Specifications		
Model	PA-ET-2PD	PA-ET-2PD-XL
Max. Work Place (mm)	Ø 600 x 1.000	Ø 800 x 1.400
Fixture Area (mm)	Ø 800 x 1.250	Ø 1.000 x 1.600
Payload (each in kg)	250	250 / 500
Turn Time (sec.)	≤ 6	≤ 6
Measurements (L x W x H in cm)	580 x 310 x 250	650 x 360 x 250
Approx. Weight (kg)	4.300	5.200
Recommended robot type	TM-1400	TM-1400/ TM-1800

Specifications		
Model	PA-ET-2DK-250	PA-ET-2DK-500
Max. Work Place (mm)	Ø 1.000 x 800	Ø 1.300 x 600
Fixture Area (mm)	Ø 1.000 x 800	Ø 1.000 x 1.000
Payload (each in kg)	250	500
Turn Time (sec.)	≤ 6	≤ 6
Measurements (L x W x H in cm)	650 x 310 x 230	680 x 350 x 230
Approx. Weight (kg)	5.000	5.500
Recommended robot type	depends on task	

PA-TT-SERIES

PA-TT-SERIES

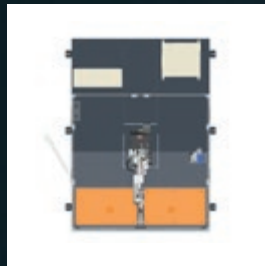
PA-TT / PA-2PD-250



PA-TT Perspective



PA-TT Transparent Perspective



PA-TT Top View



PA-TT Side View

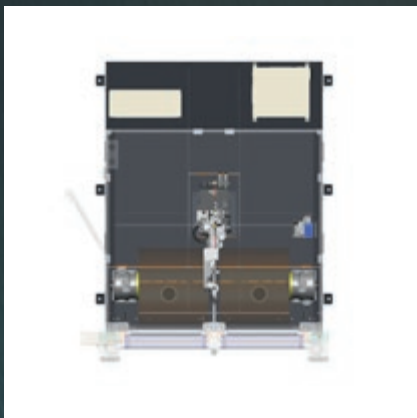
Specifications		
Model	PA-TT	PA-TT-2PD-250
Work Table (mm)	1.000 x 600	775 x 600
Max. Work Place (mm)	900 x 600	700 x 600
Fixture Area (mm)	1.000 x 600	775 x 600
Payload (each in kg)	400	250
Measurements (L x W x H in cm)	320 x 240 x 260	320 x 240 x 260
Approx. Weight (kg)	2.500	2.800
Recommended robot type	TM-1400	TM-1400

PA-TT-2PD-SERIES

PA-TT-2PD-250 / PA-TT-2PD-500



PA-TT-2PD Transparent Perspective



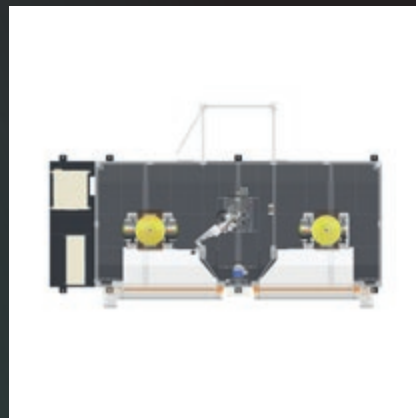
PA-TT-2PD Top View

PA-TT-2DK-SERIES

PA-TT-2DK-300 / PA-TT-2DK-500



PA-TT-2DK Transparent Perspective



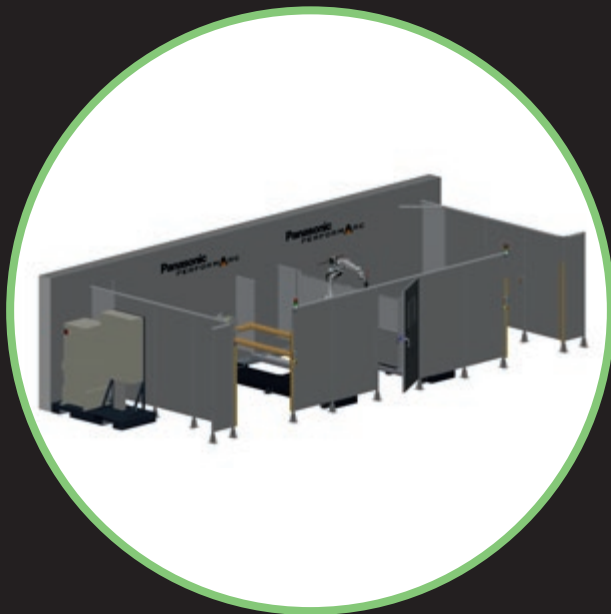
PA-TT-2DK Top View

Specifications		
Model	PA-TT-2PD-250	PA-TT-2PD-500
Max. Work Place (mm)	Ø 800 x 1.000	Ø 800 x 1.000
Fixture Area (mm)	Ø 800 x 1.250	Ø 800 x 1.250
Payload (each in kg)	300	600
Measurements (L x W x H in cm)	240 x 530 x 270	240 x 530 x 270
Approx. Weight (kg)	4.300	4.500
Recommended robot type	TM-1800	TM-1800

Specifications		
Model	PA-TT-2DK-300	PA-TT-2DK-500
Max. Work Place (mm)	1.100 x 1.100 x 500	1.100 x 1.100 x 500
Fixture Area (mm)	-	-
Payload (each in kg)	300	500
Measurements (L x W x H in cm)	540 x 240 x 270	540 x 240 x 270
Approx. Weight (kg)	4.400	4.500
Recommended robot type	TM-1800	TM-1800

PA-H-FRAME-SERIES

PA-H-Frame-2500 / PA-H-Frame-3000



PA-H-Frame Perspective



PA-MT Transparent Perspective



PA-MT Top View



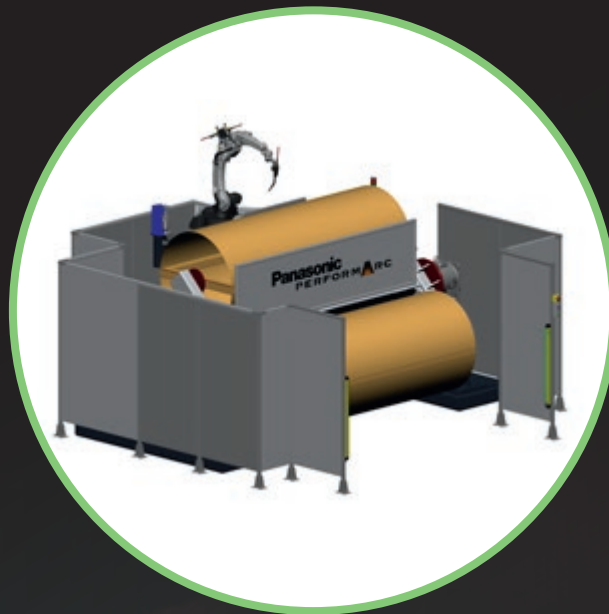
PA-MT Side View

Specifications		
Model	PA-H-Frame-2500	PA-H-Frame-3000
Max. Work Place (mm)	Ø 1.000 x 2.000	Ø 1.000 x 2.600
Fixture Area (mm)	Ø 1.200 x 2.100	Ø 1.200 x 3.000
Payload (each in kg)	250-1.000	250-1.000
Measurements (L x W x H in cm)	460 x 490 x 280	51 x 490 x 240
Approx. Weight (kg)	4.000/4.200/4.500	4.300/4.500/4.800
Recommended robot type	TM-1800	TM-1800/TM-2000

PA-FW-3PD-SERIES

ALSO AVAILABLE
WITH TWO ROBOTS!

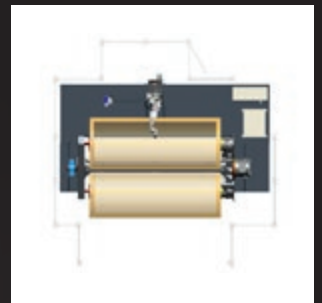
PA-FW-3PD-2000 / PA-FW-3PD-2500 / PA-FW-3PD-3000 /
PA-FW-3PD-3500 / PA-FW-3PD-2R



PA-FW-3PD Perspective



PA-FW-3PD Transparent Perspective



PA-FW-3PD Top View



PA-FW-3PD Side View

Specifications				
Model	PA-FW-3PD-2000	PA-FW-3PD-2500	PA-FW-3PD-3000	PA-FW-3PD-3500
Max. Work Place (mm)	Ø 1.000 x 1.800	Ø 1.000 x 2.200	Ø 1.000 x 2.500	Ø 1.000 x 3.200
Fixture Area (mm)	Ø 1.000 x 2.000	Ø 1.000 x 2.500	Ø 1.000 x 3.000	Ø 1.000 x 3.500
Payload (each in kg)	250/500	250/500	250/500	250/500
Measurements (L x W x H in cm)	410 x 480 x 280	460 x 480 x 280	510 x 480 x 280	560 x 480 x 280
Approx. Weight (kg)	4.000	4.200	4.400	4.600
Recommended robot type	TM-1800	TM-1800	TM-2000	2xTM-1800

DEDICATED SYSTEMS



2 x Tilt & Turn Positioner
Load Capacity: 1.500 kg

Ceeling Type Shifter
with 2 x Positioners
Load Capacity: 2.000 kg



Three Stations Concept
2 x Tilt & Turn Positioners
1 x Turn Positioner



Ferris Wheel System
with Shifter
2 x 1.000 kg Positioners



EQUIPMENT OPTIONS

**TAWERS WELDING SYSTEM
WITH INTEGRATED POWER
SOURCE**

**PANASONIC WELDING
MANIPULATOR**

**PANASONIC MIG/MAG
PULSE POWER SOURCES**

WATERCOOLED TORCH

FUME HOOD

TORCH CLEANER

**PANASONIC TIG
POWER SOURCES**

FAST SLIDING DOORS

**DTPS OFFLINE
PROGRAMMING AND
SIMULATION SOFTWARE**

JIG/FIXTURE FRAME

**Panasonic Automotive &
Industrial Systems Europe GmbH**

Robot & Welding
Jagenbergstr. 11 a
41468 Neuss, Germany

Tel.: +49 (0) 21 31 / 608 99 - 0
Fax: +49 (0) 21 31 / 608 99 - 200

robots@eu.panasonic.com
www.panasonicrobotics.eu