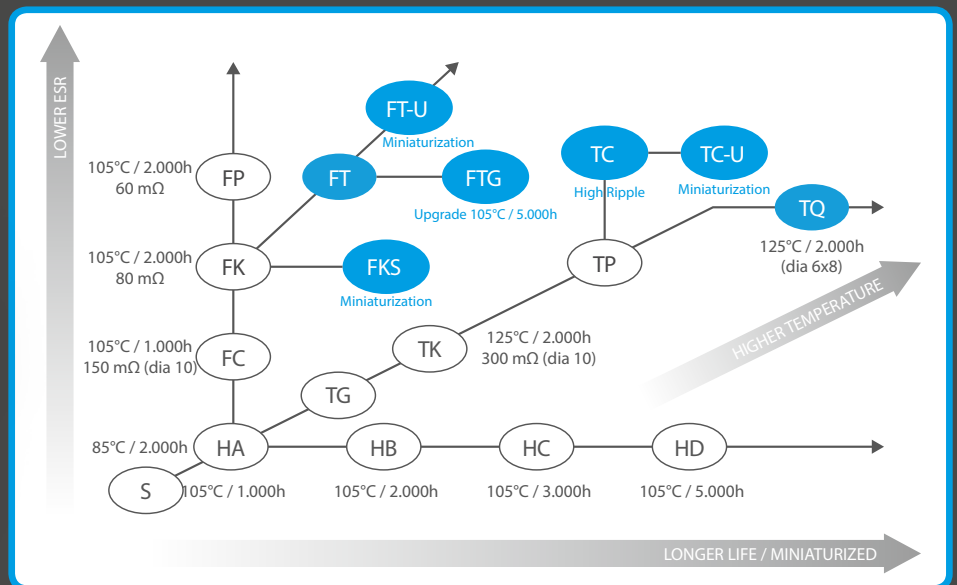
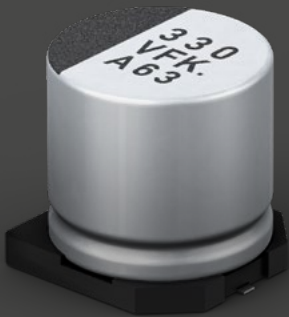


SMD Lytic Capacitor V Chip

1. KEY POINT

- > High reliability, long life, low ESR and high ripple current of the top-class in aluminium electrolytic capacitor
- > Vibration-proof product is available upon request (φ6.3mm and larger)
- > RoHS directive (2011/65/EU) and Pb free reflow soldering compliant

2. LINE-UP



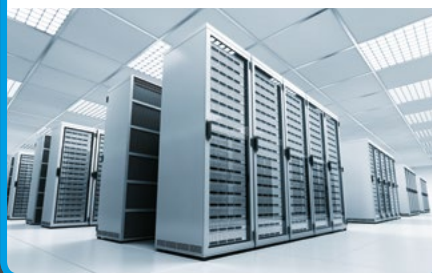
AUTOMOTIVE

- > Engine ECU
- > Body ECU
- > Blower motor
- > BMS
- > 48V-ISG
- > EPS
- > LED headlight
- > Electric pump



BASE STATION

- > Small cell
- > Server
- > Router
- > Switches



INDUSTRIAL

- > EV station
- > Smart meter
- > Security camera
- > Solar power



SMD Lytic Capacitor V Chip

4. FEATURES

- > Low ESR and high Capacitance
- > AEC-Q200 compliant
- > Vibration-proof product is available upon request. ($\phi 6.3$ mm and larger)
- > RoHS directive compliant

	FKS	FKS Medium-size	FT	FT-U	FT-G
Size	$\phi 4 \times 5.8 \sim \phi 10 \times 10.2$ mm	$\phi 12.5 \times 13.5 \sim \phi 18 \times 21.5$ mm	$\phi 4 \times 5.8 \sim \phi 10 \times 10.2$ mm	$\phi 4 \times 5.8 \sim \phi 10 \times 10.2$ mm	$\phi 8 \times 10.2 \sim \phi 10 \times 10.2$ mm
Temperature range	-55°C to 105°C	-55°C to 105°C	-55°C to 105°C	-55°C to 105°C	-55°C to 105°C
Rated voltage	6.3 – 50 V DC	6.3 – 35 V DC	6.3 – 50 V DC	16 – 50 V DC	6.3 – 50 V DC
Capacitance	10 – 1800 μ F		10 – 2200 μ F	10 – 1200 μ F	220 – 2200 μ F
Endurance	105 °C 2000 h	105 °C 5000 h	105 °C 2000 h	105 °C 2000 h	105 °C 5000 h (6.3 V : 3000 h)
Ripple current (100KHz/max temp)	60 – 850 mA rms	1100 – 2640 mA rms	160 – 1190 mA rms	85 – 1190 mA rms	670 – 1190 mA rms
ESR	0.08 – 3.5 Ω	0.025 – 0.06 Ω	0.06 – 0.88 Ω	0.06 – 2.3 Ω	0.06 – 0.12 Ω



5. FEATURES

- > Endurance: 2000 ~ 3000 h at 125 °C
- > ESR after endurance: Guarantee after 2000 h at -40 °C
- > AEC-Q200 compliant
- > Vibration-proof product is available upon request. ($\phi 6.3$ mm and larger)
- > RoHS directive compliant

	TC	TCU	TQ
Size	$\phi 6.3 \times 7.7 \sim \phi 10 \times 10.2$ mm	$\phi 8 \times 10.2 \sim \phi 10 \times 10.2$ mm	$\phi 6.3 \times 7.7$ mm
Temperature range	-40°C to 125°C	-40°C to 125°C	-40°C to 125°C
Rated voltage	10 – 35 V DC	10 – 35 V DC	35 V DC
Capacitance	47 – 470 μ F	220 – 680 μ F	47 – 100 μ F
Endurance	125 °C 3000 h ($\phi 6.3$: 2000 h)	125 °C 3000 h	125 °C 2000 h
Ripple current (100KHz/max temp)	300 – 750 mA rms	410 – 750 mA rms	197 mA rms
ESR	0.15 – 0.45 Ω	0.15 – 0.20 Ω	0.30 Ω

